

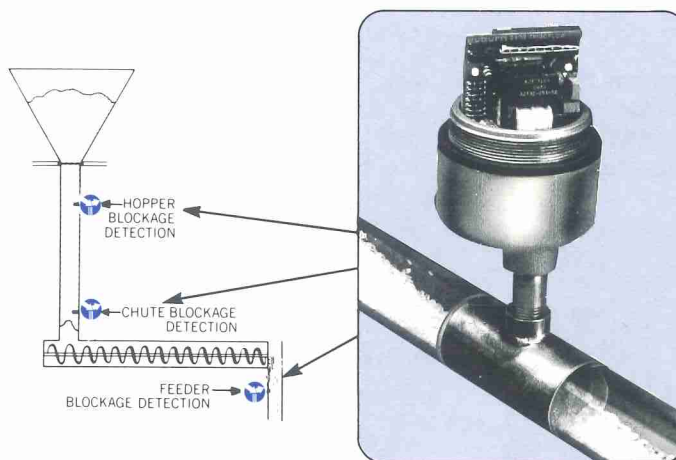


Flow Blockage Detection

Model 2400

Prompt, reliable detection of flow blockages and feed failures is available with the **Triboflow[®]** Model 2400 Flow Blockage Detector.

Utilizing Auburn International's unique triboelectric technology, **Triboflow** directly monitors solids flow activity by monitoring the frictional signal which occurs when particles collide with **Triboflow's** probe. Should a blockage of flow occur, **Triboflow** will detect the resulting loss of motion, because the signal will drop below a desired level. A contact closure will be triggered to alert the operator of flow disruption. Prompt, corrective action can then be taken to prevent downtime, save product loss, avoid machinery damage, and reduce maintenance time.



The triboelectric principle of operation offers assurance that your flow stream is being directly monitored for flow disruptions. And **Triboflow** will warn of flow difficulties earlier, and with greater reliability than optical, nuclear, microwave, or capacitance devices which only monitor material presence (concentration, density or proximity). **Triboflow** monitors material *movement!*

Triboflow Advantages

- ◆ Low Cost
- ◆ No Moving Parts
- ◆ Maintenance-Free
- ◆ Highly Reliable
- ◆ Easy Installation
- ◆ Direct Monitoring of Material Movement

Typical Triboflow Industries

- ◆ Polymer Manufacturing
- ◆ Food Processing
- ◆ Chemical Processing
- ◆ Cement Handling
- ◆ Pharmaceutical Manufacturing
- ◆ Alumina Processing

ELECTRONICS

Temperature Range:
 -10 to 145°F (-23 to 63°C) (Operating)
 -40 to 160°F (-40 to 71°C) (Storage)

Humidity Range:
 0 to 95% Relative Non-Condensing

Relay Contacts:
 SPDT 5 A @ 28 VDC or 120 VAC, 100 VA max.

Power:
 105 to 130 VAC 50/60 Hz (Std)
 210 to 260 VAC 50/60 Hz (Opt)
 10-32 VDC (Opt)
 5 Watts Maximum Load

Alarm Response Time:
 1 to 40 Seconds, Customer Adjustable

Enclosure: NEMA 4/9

SENSOR

Temperature Range:
 -40 to 160°F (-40 to 71°C) - Teflon Ins. (Std)
 -40 to 350°F (-40 to 177°C) -
 with Air Purge (Opt)

Pressure Range:
 30 psi (2 bar) (Std)
 2,000 psi (138 bar) (Opt)

Probe: 316 Stainless Steel (Std)
 Tungsten Carbide (Opt)

Other Parts: 303 Stainless Steel (Std)

Insertion Length: 1/2 inch (1.3 cm) (Std)
 3, 6, 12 or 18 inch (7.6, 15.2, 30.5, 45.7, 76.2, 91.4 cm) (Opt)
 Other (Special)

Hazardous Rating: CSA listed for Class II, III in Division 1 & 2, Groups E, F, G (with standard power)

CONNECTIONS

Process/Sensor:
 1/2 inch NPT Male Fitting (Std)
 Quick Release Clamp (Opt)

Electronics/Power:
 3/4 inch NPT Female Conduit Fitting

INSTALLATION

Weld a half-coupling or the quick release ferrule over a hole in the side of the pipe or duct. Screw in or clamp the sensor in place. (Please refer to manual for details.)

*Covered by one or more of the following patents: 4,063,153, 4,074,184, 4,291,273, 4,288,741, 4,631,482, 4,619,145, 4,714,890, 4,904,944, 4,774,453, 5,054,325, 5,095,275. Product also covered by patents in countries other than the United States.